

AL™ Series UHF Television Antennas

Features/Benefits

- Rated to handle up to 5 kw average power
- Single module, end fed antenna
- 4, 6, and 8 bay models
- Omnioid pattern standard (directional patterns also available)
- Horizontally, elliptically, and circularly polarized models available
- Hardware furnished for pipe or flush mounting
- Slot cover radome for environmental protection
- Lightweight, cost effective shipping container. Wood crate export packing available.
- Null Fill Standard

The ERI Low Power AL Series (CCIR Band IV/V) television transmitting antenna designed for UHF translator and low power applications offers a combination of quality, reliability, performance and economy.

Our engineering staff uses a state-of-the-art manufacturing and testing facility for the development of antenna designs and the production of broadcast antennas. Every ERI antenna has been individually designed and engineered to meet or exceed customer specifications.

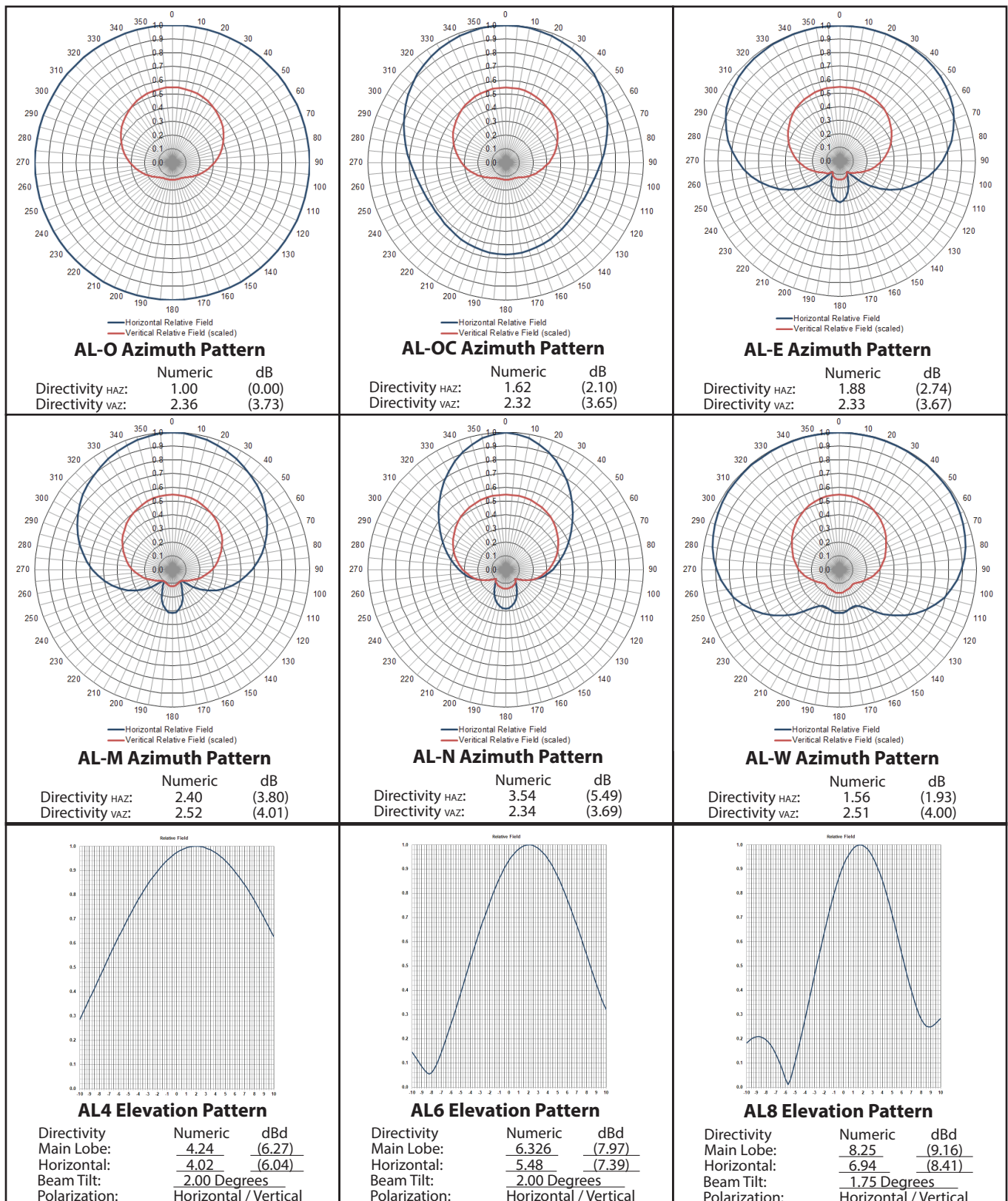
Part Number Definition for AL Series UHF Television Antennas

		AL"a"b"-c" d"-e"
a =	Number of Bays	4, 6, or 8
b =	Azimuth pattern	Blank = Omnioid (OC) E = Extended Cardioid* M = Medium Cardioid* N = Narrow Cardioid* O = Omnidirectional W = Wide Cardioid* * Additional cost.
c =	Channel Number	Regions = 14 to 36 European Regions = 14E to 49E Australian Regions = 14A to 52A
d =	Bandwidth	Blank = Single channel 2 = 12 MHz bandwidth 3 = 18 MHz bandwidth
e =	Polarization	Blank = Horizontal E = Elliptical C = Circular



AL™ Series UHF Television Antennas

AL Series Circularly/Elliptically Polarized Antenna Patterns



Electronics Research, Inc. • 7777 Gardner Road • Chandler, IN 47610-9219 • USA | +1 812 925-6000 (tel) • +1 812 925-4030 (fax)

Your Single Source for Broadcast Solutions™ • Call Toll-free at 877 ERI-LINE • Visit Online at www.eriinc.com

© 2022 Electronics Research, Inc. All rights reserved.
Revised Dec 9, 2022

AL™ Series UHF Television Antennas

AL Series Circularly and Elliptically Polarized UHF Television Antennas General Specifications

	AL4	AL6	AL8	
Mechanical Specifications				
Mount:		Side		
Number of Bays:	4	6	8	
Slot Cover Height:		3.5 in. (89 mm)		
Slot Cover Color:		Gray		
Ingress Protection Rating (IEC EN 60529):		IP56		
Length:	11.5 ft (3.5 meters)	15.3 ft (4.7 meters)	See tables	
O and OC Azimuth Patterns				
Weight (Antenna only):	74 lbm (33.6 kg)	105 lbm (47.6 kg)		
Weight (Antenna with 1/2 inch ice):	114 lbm (51.7 kg)	162 lbm (73.5 kg)		
EPA, Normal Exposure (Antenna only):	3.99 sq. ft. (0.37 sq. m.)	5.31 sq. ft. (0.49 sq. m.)		
EPA, Transverse Exposure (Antenna only):	8.36 sq. ft. (0.78 sq. m.)	11.95 sq. ft. (1.11 sq. m.)		
EPA, Normal Exposure (Antenna with 1/2 inch ice):	5.14 sq. ft. (0.48 sq. m.)	6.84 sq. ft. (0.64 sq. m.)		
EPA, Transverse Exposure (Antenna with 1/2 inch ice):	10.77 sq. ft. (1.00 sq. m.)	15.40 sq. ft. (1.43 sq. m.)		
W Azimuth Pattern				
Weight (Antenna only):	86 lbm (39.0 kg)	121 lbm (54.9 kg)		
Weight (Antenna with 1/2 inch ice):	133 lbm (60.3 kg)	187 lbm (84.8 kg)		
EPA, Normal Exposure (Antenna only):	9.82 sq. ft. (0.91 sq. m.)	13.06 sq. ft. (1.21 sq. m.)		
EPA, Transverse Exposure (Antenna only):	10.38 sq. ft. (0.96 sq. m.)	14.44 sq. ft. (1.34 sq. m.)		
EPA, Normal Exposure (Antenna with 1/2 inch ice):	11.45 sq. ft. (1.06 sq. m.)	15.27 sq. ft. (1.42 sq. m.)		
EPA, Transverse Exposure (Antenna with 1/2 inch ice):	12.67 sq. ft. (1.18 sq. m.)	16.89 sq. ft. (1.57 sq. m.)		
Electrical Specifications				
Band:		UHF		
Polarization:		Elliptical		
	Azimuth Pattern			
Peak Gain (Elliptically Polarized, Vertically Polarized ERP equals 30% Horizontally Polarized ERP):	E Horizontal	6.42 numeric (8.07 dBd)	9.48 numeric (9.77 dBd)	12.49 numeric (10.96 dBd)
	Vertical	1.93 numeric (2.85 dBd)	2.84 numeric (4.54 dBd)	3.75 numeric (5.74 dBd)
	M Horizontal	7.91 numeric (8.98 dBd)	11.69 numeric (10.68 dBd)	15.40 numeric (11.88 dBd)
	Vertical	2.37 numeric (3.76 dBd)	3.51 numeric (5.45 dBd)	4.62 numeric (6.65 dBd)
	N Horizontal	10.32 numeric (10.14 dBd)	15.24 numeric (11.83 dBd)	20.09 numeric (13.03 dBd)
	Vertical	3.10 numeric (4.91 dBd)	4.57 numeric (6.60 dBd)	6.03 numeric (7.80 dBd)
	O Horizontal	3.76 numeric (5.75 dBd)	5.55 numeric (7.45 dBd)	7.32 numeric (8.64 dBd)
	Vertical	1.13 numeric (0.53 dBd)	1.67 numeric (2.22 dBd)	2.20 numeric (3.42 dBd)
	OC Horizontal	5.67 numeric (7.54 dBd)	8.38 numeric (9.23 dBd)	11.04 numeric (10.43 dBd)
	Vertical	1.70 numeric (2.31 dBd)	2.51 numeric (4.00 dBd)	3.31 numeric (5.20 dBd)
	W Horizontal	5.64 numeric (7.51 dBd)	8.32 numeric (9.20 dBd)	10.96 numeric (10.40 dBd)
	Vertical	1.69 numeric (2.28 dBd)	2.50 numeric (3.97 dBd)	3.29 numeric (5.17 dBd)
Beam Tilt, Degrees:	2.00-degrees		1.75-degrees	

AL™ Series UHF Television Antennas

AL Series Circularly and Elliptically Polarized UHF Television Antennas General Specifications

	AL4	AL6	AL8
Feed Configuration:		End	
Antenna VSWR, Maximum:		1.10 over 6 MHz channel	
RF Input:		1-5/8 inch EIA Male	
Power Rating, Average:		5.0 kW	
RF Channel:		14 to 36	

Specifications Notes:

Average power rating for DVB-T, DVB-M, and ATSC operation up to 608 MHz (RF Channel36). Contact ERI for other digital television systems and if operation at higher RF channels is required.

All AL Series UHF television antennas are shipped with two clamp on brackets for mounting on poles or tower legs from 1.315-inches (33 mm) to 3.5-inches (89 mm) OD or to flush mount to flat surfaces from 0.50-inches (13 mm) to 1.75-inches (45 mm). Standoff support pipes, face mount brackets, and mounts for larger diameter poles are available from ERI as optional items. Please contact ERI for a proposal for these requirements.

The IEC Test Standard EN 60529 outlines an international classification system for the sealing effectiveness of enclosures of electrical equipment against the intrusion into the equipment of foreign objects (i.e. tools, dust, fingers) and moisture. This classification system uses the letters "IP" ("Ingress Protection") followed by two digits. The first digit of the IP code indicates the degree that persons are protected against contact with moving parts (other than smooth rotating shafts, etc.) and the degree that equipment is protected against solid foreign bodies intruding into an enclosure. The second digit indicates the degree of protection of the equipment inside the enclosure against the harmful entry of various forms of moisture (e.g. dripping, spraying, submersion, etc.)

AL™ Series UHF Television Antennas

AL8 Circularly / Elliptically Polarized UHF Television Antenna Mechanical Specifications

RF Channel	Weight				Effective Projected Area (EPA)			
	Antenna Only		1/2-inch Radial Ice		Antenna Only		1/2-inch Radial Ice	
	0 and OC Azimuth Patterns							
14	121 lbm	(54.9 kg)	196 lbm	(88.8 kg)	9.90 sq. ft.	(0.92 sq. m.)	12.33 sq. ft.	(1.15 sq. m.)
15	120 lbm	(54.6 kg)	195 lbm	(88.3 kg)	9.84 sq. ft.	(0.91 sq. m.)	12.25 sq. ft.	(1.14 sq. m.)
16	120 lbm	(54.2 kg)	193 lbm	(87.7 kg)	9.77 sq. ft.	(0.91 sq. m.)	12.16 sq. ft.	(1.13 sq. m.)
17	119 lbm	(53.9 kg)	192 lbm	(87.2 kg)	9.70 sq. ft.	(0.90 sq. m.)	12.08 sq. ft.	(1.12 sq. m.)
18	118 lbm	(53.6 kg)	191 lbm	(86.7 kg)	9.64 sq. ft.	(0.90 sq. m.)	12.00 sq. ft.	(1.12 sq. m.)
19	117 lbm	(53.3 kg)	190 lbm	(86.1 kg)	9.57 sq. ft.	(0.89 sq. m.)	11.92 sq. ft.	(1.11 sq. m.)
20	117 lbm	(53.0 kg)	189 lbm	(85.6 kg)	9.50 sq. ft.	(0.88 sq. m.)	11.84 sq. ft.	(1.10 sq. m.)
21	116 lbm	(52.7 kg)	187 lbm	(85.0 kg)	9.44 sq. ft.	(0.88 sq. m.)	11.76 sq. ft.	(1.09 sq. m.)
22	115 lbm	(52.3 kg)	186 lbm	(84.5 kg)	9.37 sq. ft.	(0.87 sq. m.)	11.67 sq. ft.	(1.08 sq. m.)
23	115 lbm	(52.0 kg)	185 lbm	(84.0 kg)	9.31 sq. ft.	(0.86 sq. m.)	11.59 sq. ft.	(1.08 sq. m.)
24	114 lbm	(51.7 kg)	184 lbm	(83.4 kg)	9.24 sq. ft.	(0.86 sq. m.)	11.51 sq. ft.	(1.07 sq. m.)
25	113 lbm	(51.4 kg)	183 lbm	(82.9 kg)	9.17 sq. ft.	(0.85 sq. m.)	11.43 sq. ft.	(1.06 sq. m.)
26	113 lbm	(51.1 kg)	182 lbm	(82.4 kg)	9.11 sq. ft.	(0.85 sq. m.)	11.35 sq. ft.	(1.05 sq. m.)
27	112 lbm	(50.7 kg)	180 lbm	(81.8 kg)	9.04 sq. ft.	(0.84 sq. m.)	11.26 sq. ft.	(1.05 sq. m.)
28	111 lbm	(50.4 kg)	179 lbm	(81.3 kg)	8.97 sq. ft.	(0.83 sq. m.)	11.18 sq. ft.	(1.04 sq. m.)
29	110 lbm	(50.1 kg)	178 lbm	(80.7 kg)	8.91 sq. ft.	(0.83 sq. m.)	11.10 sq. ft.	(1.03 sq. m.)
30	110 lbm	(49.8 kg)	177 lbm	(80.2 kg)	8.84 sq. ft.	(0.82 sq. m.)	11.02 sq. ft.	(1.02 sq. m.)
31	109 lbm	(49.5 kg)	176 lbm	(79.7 kg)	8.78 sq. ft.	(0.82 sq. m.)	10.94 sq. ft.	(1.02 sq. m.)
32	108 lbm	(49.2 kg)	174 lbm	(79.1 kg)	8.71 sq. ft.	(0.81 sq. m.)	10.86 sq. ft.	(1.01 sq. m.)
33	108 lbm	(48.8 kg)	173 lbm	(78.6 kg)	8.64 sq. ft.	(0.80 sq. m.)	10.77 sq. ft.	(1.00 sq. m.)
34	107 lbm	(48.5 kg)	172 lbm	(78.1 kg)	8.58 sq. ft.	(0.80 sq. m.)	10.69 sq. ft.	(0.99 sq. m.)
35	106 lbm	(48.2 kg)	171 lbm	(77.5 kg)	8.51 sq. ft.	(0.79 sq. m.)	10.61 sq. ft.	(0.99 sq. m.)
36	106 lbm	(47.9 kg)	170 lbm	(77.0 kg)	8.44 sq. ft.	(0.78 sq. m.)	10.53 sq. ft.	(0.98 sq. m.)
	E, M, and N Azimuth Patterns							
14	144 lbm	(65.4 kg)	234 lbm	(106.3 kg)	16.26 sq. ft.	(1.51 sq. m.)	19.85 sq. ft.	(1.84 sq. m.)
15	143 lbm	(65.0 kg)	233 lbm	(105.7 kg)	16.21 sq. ft.	(1.51 sq. m.)	19.79 sq. ft.	(1.84 sq. m.)
16	143 lbm	(64.7 kg)	232 lbm	(105.2 kg)	16.16 sq. ft.	(1.50 sq. m.)	19.73 sq. ft.	(1.83 sq. m.)
17	142 lbm	(64.4 kg)	231 lbm	(104.7 kg)	16.12 sq. ft.	(1.50 sq. m.)	19.66 sq. ft.	(1.83 sq. m.)
18	141 lbm	(64.1 kg)	230 lbm	(104.1 kg)	16.07 sq. ft.	(1.49 sq. m.)	19.60 sq. ft.	(1.82 sq. m.)
19	141 lbm	(63.8 kg)	228 lbm	(103.6 kg)	16.03 sq. ft.	(1.49 sq. m.)	19.54 sq. ft.	(1.82 sq. m.)
20	140 lbm	(63.5 kg)	227 lbm	(103.1 kg)	15.98 sq. ft.	(1.49 sq. m.)	19.48 sq. ft.	(1.81 sq. m.)
21	139 lbm	(63.1 kg)	226 lbm	(102.5 kg)	15.93 sq. ft.	(1.48 sq. m.)	19.42 sq. ft.	(1.80 sq. m.)
22	138 lbm	(62.8 kg)	225 lbm	(102.0 kg)	15.89 sq. ft.	(1.48 sq. m.)	19.36 sq. ft.	(1.80 sq. m.)
23	138 lbm	(62.5 kg)	224 lbm	(101.4 kg)	15.84 sq. ft.	(1.47 sq. m.)	19.30 sq. ft.	(1.79 sq. m.)
24	137 lbm	(62.2 kg)	222 lbm	(100.9 kg)	15.79 sq. ft.	(1.47 sq. m.)	19.24 sq. ft.	(1.79 sq. m.)
25	136 lbm	(61.9 kg)	221 lbm	(100.4 kg)	15.75 sq. ft.	(1.46 sq. m.)	19.17 sq. ft.	(1.78 sq. m.)
26	136 lbm	(61.5 kg)	220 lbm	(99.8 kg)	15.70 sq. ft.	(1.46 sq. m.)	19.11 sq. ft.	(1.78 sq. m.)
27	135 lbm	(61.2 kg)	219 lbm	(99.3 kg)	15.66 sq. ft.	(1.45 sq. m.)	19.05 sq. ft.	(1.77 sq. m.)
28	134 lbm	(60.9 kg)	218 lbm	(98.7 kg)	15.61 sq. ft.	(1.45 sq. m.)	18.99 sq. ft.	(1.76 sq. m.)
29	134 lbm	(60.6 kg)	217 lbm	(98.2 kg)	15.56 sq. ft.	(1.45 sq. m.)	18.93 sq. ft.	(1.76 sq. m.)
30	133 lbm	(60.3 kg)	215 lbm	(97.7 kg)	15.52 sq. ft.	(1.44 sq. m.)	18.87 sq. ft.	(1.75 sq. m.)
31	132 lbm	(59.9 kg)	214 lbm	(97.1 kg)	15.47 sq. ft.	(1.44 sq. m.)	18.81 sq. ft.	(1.75 sq. m.)
32	131 lbm	(59.6 kg)	213 lbm	(96.6 kg)	15.42 sq. ft.	(1.43 sq. m.)	18.75 sq. ft.	(1.74 sq. m.)
33	131 lbm	(59.3 kg)	212 lbm	(96.1 kg)	15.38 sq. ft.	(1.43 sq. m.)	18.68 sq. ft.	(1.74 sq. m.)
34	130 lbm	(59.0 kg)	211 lbm	(95.5 kg)	15.33 sq. ft.	(1.42 sq. m.)	18.62 sq. ft.	(1.73 sq. m.)
35	129 lbm	(58.7 kg)	209 lbm	(95.0 kg)	15.29 sq. ft.	(1.42 sq. m.)	18.56 sq. ft.	(1.73 sq. m.)
36	129 lbm	(58.4 kg)	208 lbm	(94.4 kg)	15.24 sq. ft.	(1.42 sq. m.)	18.50 sq. ft.	(1.72 sq. m.)
	W Azimuth Pattern							
14	144 lbm	(65.4 kg)	242 lbm	(109.6 kg)	17.92 sq. ft.	(1.67 sq. m.)	21.56 sq. ft.	(2.00 sq. m.)
15	143 lbm	(65.0 kg)	240 lbm	(109.1 kg)	17.88 sq. ft.	(1.66 sq. m.)	21.50 sq. ft.	(2.00 sq. m.)
16	143 lbm	(64.7 kg)	239 lbm	(108.5 kg)	17.83 sq. ft.	(1.66 sq. m.)	21.44 sq. ft.	(1.99 sq. m.)
17	142 lbm	(64.4 kg)	238 lbm	(108.0 kg)	17.78 sq. ft.	(1.65 sq. m.)	21.38 sq. ft.	(1.99 sq. m.)
18	141 lbm	(64.1 kg)	237 lbm	(107.5 kg)	17.74 sq. ft.	(1.65 sq. m.)	21.32 sq. ft.	(1.98 sq. m.)

AL™ Series UHF Television Antennas

AL8 Circularly / Elliptically Polarized UHF Television Antenna Mechanical Specifications

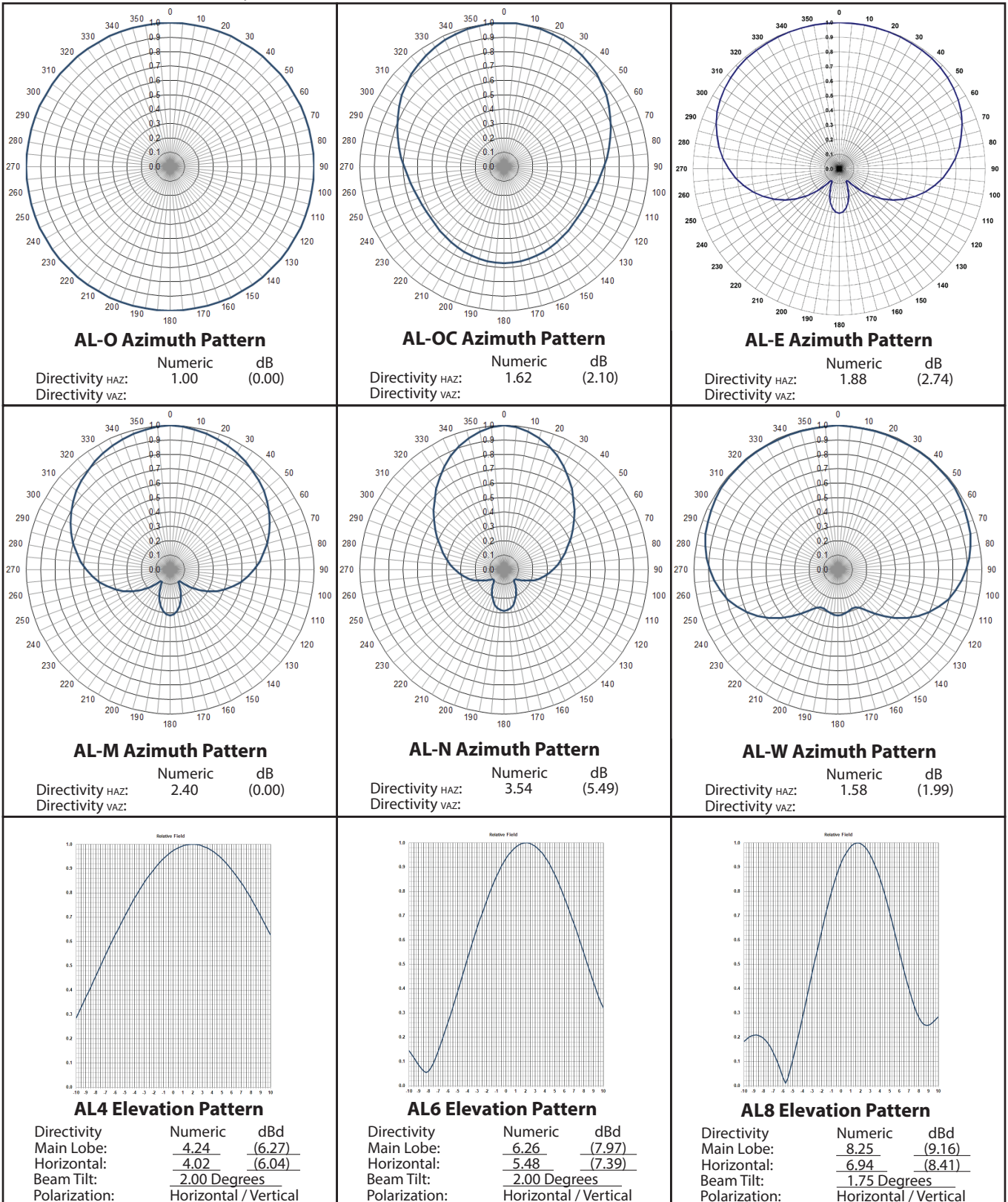
RF Channel	Weight				Effective Projected Area (EPA)			
	Antenna Only		1/2-inch Radial Ice		Antenna Only		1/2-inch Radial Ice	
19	141 lbm	(63.8 kg)	236 lbm	(106.9 kg)	17.69 sq. ft.	(1.64 sq. m.)	21.25 sq. ft.	(1.98 sq. m.)
20	140 lbm	(63.5 kg)	235 lbm	(106.4 kg)	17.64 sq. ft.	(1.64 sq. m.)	21.19 sq. ft.	(1.97 sq. m.)
21	139 lbm	(63.1 kg)	233 lbm	(105.9 kg)	17.60 sq. ft.	(1.64 sq. m.)	21.13 sq. ft.	(1.96 sq. m.)
22	138 lbm	(62.8 kg)	232 lbm	(105.3 kg)	17.55 sq. ft.	(1.63 sq. m.)	21.07 sq. ft.	(1.96 sq. m.)
23	138 lbm	(62.5 kg)	231 lbm	(104.8 kg)	17.51 sq. ft.	(1.63 sq. m.)	21.01 sq. ft.	(1.95 sq. m.)
24	137 lbm	(62.2 kg)	230 lbm	(104.2 kg)	17.46 sq. ft.	(1.62 sq. m.)	20.95 sq. ft.	(1.95 sq. m.)
25	136 lbm	(61.9 kg)	229 lbm	(103.7 kg)	17.41 sq. ft.	(1.62 sq. m.)	20.89 sq. ft.	(1.94 sq. m.)
26	136 lbm	(61.5 kg)	227 lbm	(103.2 kg)	17.37 sq. ft.	(1.61 sq. m.)	20.83 sq. ft.	(1.94 sq. m.)
27	135 lbm	(61.2 kg)	226 lbm	(102.6 kg)	17.32 sq. ft.	(1.61 sq. m.)	20.76 sq. ft.	(1.93 sq. m.)
28	134 lbm	(60.9 kg)	225 lbm	(102.1 kg)	17.27 sq. ft.	(1.61 sq. m.)	20.70 sq. ft.	(1.92 sq. m.)
29	134 lbm	(60.6 kg)	224 lbm	(101.6 kg)	17.23 sq. ft.	(1.60 sq. m.)	20.64 sq. ft.	(1.92 sq. m.)
30	133 lbm	(60.3 kg)	223 lbm	(101.0 kg)	17.18 sq. ft.	(1.60 sq. m.)	20.58 sq. ft.	(1.91 sq. m.)
31	132 lbm	(59.9 kg)	222 lbm	(100.5 kg)	17.14 sq. ft.	(1.59 sq. m.)	20.52 sq. ft.	(1.91 sq. m.)
32	131 lbm	(59.6 kg)	220 lbm	(99.9 kg)	17.09 sq. ft.	(1.59 sq. m.)	20.46 sq. ft.	(1.90 sq. m.)
33	131 lbm	(59.3 kg)	219 lbm	(99.4 kg)	17.04 sq. ft.	(1.58 sq. m.)	20.40 sq. ft.	(1.90 sq. m.)
34	130 lbm	(59.0 kg)	218 lbm	(98.9 kg)	17.00 sq. ft.	(1.58 sq. m.)	20.34 sq. ft.	(1.89 sq. m.)
35	129 lbm	(58.7 kg)	217 lbm	(98.3 kg)	16.95 sq. ft.	(1.58 sq. m.)	20.27 sq. ft.	(1.88 sq. m.)
36	129 lbm	(58.4 kg)	216 lbm	(97.8 kg)	16.90 sq. ft.	(1.57 sq. m.)	20.21 sq. ft.	(1.88 sq. m.)

AL8 UHF Television Antenna Length

RF Channel	Length	Length
14	20.00-feet	(6.10-meters)
15	19.86-feet	(6.05-meters)
16	19.73-feet	(6.01-meters)
17	19.59-feet	(5.97-meters)
18	19.46-feet	(5.93-meters)
19	19.32-feet	(5.89-meters)
20	19.18-feet	(5.85-meters)
21	19.05-feet	(5.81-meters)
22	18.91-feet	(5.76-meters)
23	18.77-feet	(5.72-meters)
24	18.64-feet	(5.68-meters)
25	18.50-feet	(5.64-meters)
26	18.37-feet	(5.60-meters)
27	18.23-feet	(5.56-meters)
28	18.09-feet	(5.51-meters)
29	17.96-feet	(5.47-meters)
30	17.82-feet	(5.43-meters)
31	17.69-feet	(5.39-meters)
32	17.55-feet	(5.35-meters)
33	17.41-feet	(5.31-meters)
34	17.28-feet	(5.27-meters)
35	17.14-feet	(5.22-meters)
36	17.00-feet	(5.18-meters)

AL™ Series UHF Television Antennas

AL Series Horizontally Polarized Antenna Patterns



Electronics Research, Inc. • 7777 Gardner Road • Chandler, IN 47610-9219 • USA | +1 812 925-6000 (tel) • +1 812 925-4030 (fax)

Your Single Source for Broadcast Solutions™ • Call Toll-free at 877 ERI-LINE • Visit Online at www.eriinc.com

© 2022 Electronics Research, Inc. All rights reserved.
Revised Dec 9, 2022

AL™ Series UHF Television Antennas

AL Series Horizontally Polarized UHF Television Antennas General Specifications

	AL4	AL6	AL8	
Mechanical Specifications				
Mount:		Side		
Number of Bays:	4	6	8	
Slot Cover Height:		1.5 in. (38 mm)		
Slot Cover Color:		Gray		
Ingress Protection Rating (IEC EN 60529):		IP56		
Length:	11.5 ft (3.5 meters)	15.3 ft (4.7 meters)		
O and OC Azimuth Patterns				
Weight (Antenna only):	64 lbm (29.0 kg)	85 lbm (38.6 kg)		
Weight (Antenna with 1/2 inch ice):	103 lbm (46.7 kg)	137 lbm (62.1 kg)		
EPA, Normal Exposure (Antenna only):	3.99 sq. ft. (0.37 sq. m.)	5.31 sq. ft. (0.49 sq. m.)		
EPA, Transverse Exposure (Antenna only):	5.14 sq. ft. (0.48 sq. m.)	6.84 sq. ft. (0.64 sq. m.)		
EPA, Normal Exposure (Antenna with 1/2 inch ice):	5.43 sq. ft. (0.50 sq. m.)	7.22 sq. ft. (0.67 sq. m.)		
EPA, Transverse Exposure (Antenna with 1/2 inch ice):	6.57 sq. ft. (0.61 sq. m.)	8.73 sq. ft. (0.81 sq. m.)	See tables	
W Azimuth Pattern				
Weight (Antenna only):	76 lbm (34.5 kg)	101 lbm (45.8 kg)		
Weight (Antenna with 1/2 inch ice):	127 lbm (57.6 kg)	169 lbm (76.7 kg)		
EPA, Normal Exposure (Antenna only):	9.82 sq. ft. (0.91 sq. m.)	13.06 sq. ft. (1.21 sq. m.)		
EPA, Transverse Exposure (Antenna only):	7.30 sq. ft. (0.68 sq. m.)	9.71 sq. ft. (0.90 sq. m.)		
EPA, Normal Exposure (Antenna with 1/2 inch ice):	11.45 sq. ft. (1.06 sq. m.)	15.27 sq. ft. (1.42 sq. m.)		
EPA, Transverse Exposure (Antenna with 1/2 inch ice):	8.70 sq. ft. (0.81 sq. m.)	11.58 sq. ft. (1.08 sq. m.)		
Electrical Specifications				
Polarization:	Horizontal			
Band:	UHF			
Peak Gain:	Azimuth Pattern			
	E	7.97 numeric (9.02 dBd)	11.77 numeric (10.71 dBd)	15.88 numeric (12.01 dBd)
	M	10.18 numeric (10.08 dBd)	15.02 numeric (11.77 dBd)	22.13 numeric (13.45 dBd)
	N	15.01 numeric (11.76 dBd)	22.16 numeric (13.46 dBd)	32.81 numeric (15.16 dBd)
	O	4.24 numeric (6.27 dBd)	6.26 numeric (7.97 dBd)	8.25 numeric (9.16 dBd)
	OC	6.87 numeric (8.37 dBd)	10.14 numeric (10.06 dBd)	14.06 numeric (11.48 dBd)
	W	6.70 numeric (8.26 dBd)	9.89 numeric (9.95 dBd)	12.95 numeric (11.12 dBd)
Beam Tilt, Degrees:	2.00-degrees		1.75-degrees	
Feed Configuration:	End			
Antenna VSWR, Maximum:	1.10 over 6 MHz channel			
RF Input:	1-5/8 inch 50 Ohm EIA Male			
Power Rating, Average:	5.0 kW			
RF Channel:	14 to 36			

AL™ Series UHF Television Antennas

AL8 Horizontally Polarized UHF Television Antenna Mechanical Specifications

RF Channel	Weight		Effective Projected Area (EPA)			
	Antenna Only		Antenna Only		1/2-inch Radial Ice	
	O and OC Azimuth Patterns					
14	110 lbm (49.9 kg)	178 lbm (80.7 kg)	9.43 sq. ft. (0.88 sq. m.)	11.42 sq. ft. (1.06 sq. m.)		
15	109 lbm (49.6 kg)	177 lbm (80.3 kg)	9.37 sq. ft. (0.87 sq. m.)	11.34 sq. ft. (1.05 sq. m.)		
16	109 lbm (49.3 kg)	176 lbm (79.8 kg)	9.30 sq. ft. (0.86 sq. m.)	1.26 sq. ft. (1.05 sq. m.)		
17	108 lbm (49.0 kg)	175 lbm (79.3 kg)	9.24 sq. ft. (0.86 sq. m.)	11.19 sq. ft. (1.04 sq. m.)		
18	107 lbm (48.7 kg)	174 lbm (78.8 kg)	9.18 sq. ft. (0.85 sq. m.)	11.11 sq. ft. (1.03 sq. m.)		
19	107 lbm (48.4 kg)	173 lbm (78.3 kg)	9.12 sq. ft. (0.85 sq. m.)	11.04 sq. ft. (1.03 sq. m.)		
20	106 lbm (48.2 kg)	172 lbm (77.8 kg)	9.05 sq. ft. (0.84 sq. m.)	10.96 sq. ft. (1.02 sq. m.)		
21	106 lbm (47.9 kg)	170 lbm (77.3 kg)	8.99 sq. ft. (0.84 sq. m.)	10.88 sq. ft. (1.01 sq. m.)		
22	105 lbm (47.6 kg)	169 lbm (76.8 kg)	8.93 sq. ft. (0.83 sq. m.)	10.81 sq. ft. (1.00 sq. m.)		
23	104 lbm (47.3 kg)	168 lbm (76.3 kg)	8.86 sq. ft. (0.82 sq. m.)	10.73 sq. ft. (1.00 sq. m.)		
24	104 lbm (47.0 kg)	167 lbm (75.8 kg)	8.80 sq. ft. (0.82 sq. m.)	10.66 sq. ft. (0.99 sq. m.)		
25	103 lbm (46.7 kg)	166 lbm (75.4 kg)	8.74 sq. ft. (0.81 sq. m.)	10.58 sq. ft. (0.98 sq. m.)		
26	102 lbm (46.4 kg)	165 lbm (74.9 kg)	8.67 sq. ft. (0.81 sq. m.)	10.51 sq. ft. (0.98 sq. m.)		
27	102 lbm (46.1 kg)	164 lbm (74.4 kg)	8.61 sq. ft. (0.80 sq. m.)	10.43 sq. ft. (0.97 sq. m.)		
28	101 lbm (45.8 kg)	163 lbm (73.9 kg)	8.55 sq. ft. (0.79 sq. m.)	10.35 sq. ft. (0.96 sq. m.)		
29	100 lbm (45.6 kg)	162 lbm (73.4 kg)	8.48 sq. ft. (0.79 sq. m.)	10.28 sq. ft. (0.96 sq. m.)		
30	100 lbm (45.3 kg)	161 lbm (72.9 kg)	8.42 sq. ft. (0.78 sq. m.)	10.20 sq. ft. (0.95 sq. m.)		
31	99 lbm (45.0 kg)	160 lbm (72.4 kg)	8.36 sq. ft. (0.78 sq. m.)	10.13 sq. ft. (0.94 sq. m.)		
32	99 lbm (44.7 kg)	159 lbm (71.9 kg)	8.30 sq. ft. (0.77 sq. m.)	10.05 sq. ft. (0.93 sq. m.)		
33	98 lbm (44.4 kg)	158 lbm (71.4 kg)	8.23 sq. ft. (0.77 sq. m.)	9.98 sq. ft. (0.93 sq. m.)		
34	97 lbm (44.1 kg)	156 lbm (71.0 kg)	8.17 sq. ft. (0.76 sq. m.)	9.90 sq. ft. (0.92 sq. m.)		
35	97 lbm (43.8 kg)	155 lbm (70.5 kg)	8.11 sq. ft. (0.75 sq. m.)	9.82 sq. ft. (0.91 sq. m.)		
36	96 lbm (43.5 kg)	154 lbm (70.0 kg)	8.04 sq. ft. (0.75 sq. m.)	9.75 sq. ft. (0.91 sq. m.)		
	E, M, and N Azimuth Patterns					
14	131 lbm (59.4 kg)	213 lbm (96.6 kg)	15.48 sq. ft. (1.44 sq. m.)	18.38 sq. ft. (1.71 sq. m.)		
15	130 lbm (59.1 kg)	212 lbm (96.1 kg)	15.44 sq. ft. (1.43 sq. m.)	18.32 sq. ft. (1.70 sq. m.)		
16	130 lbm (58.8 kg)	211 lbm (95.6 kg)	15.39 sq. ft. (1.43 sq. m.)	18.26 sq. ft. (1.70 sq. m.)		
17	129 lbm (58.6 kg)	210 lbm (95.1 kg)	15.35 sq. ft. (1.43 sq. m.)	18.21 sq. ft. (1.69 sq. m.)		
18	128 lbm (58.3 kg)	209 lbm (94.7 kg)	15.31 sq. ft. (1.42 sq. m.)	18.15 sq. ft. (1.69 sq. m.)		
19	128 lbm (58.0 kg)	208 lbm (94.2 kg)	15.26 sq. ft. (1.42 sq. m.)	18.09 sq. ft. (1.68 sq. m.)		
20	127 lbm (57.7 kg)	207 lbm (93.7 kg)	15.22 sq. ft. (1.41 sq. m.)	18.04 sq. ft. (1.68 sq. m.)		
21	127 lbm (57.4 kg)	205 lbm (93.2 kg)	15.17 sq. ft. (1.41 sq. m.)	17.98 sq. ft. (1.67 sq. m.)		
22	126 lbm (57.1 kg)	204 lbm (92.7 kg)	15.13 sq. ft. (1.41 sq. m.)	17.92 sq. ft. (1.67 sq. m.)		
23	125 lbm (56.8 kg)	203 lbm (92.2 kg)	15.09 sq. ft. (1.40 sq. m.)	17.87 sq. ft. (1.66 sq. m.)		
24	125 lbm (56.5 kg)	202 lbm (91.7 kg)	15.04 sq. ft. (1.40 sq. m.)	17.81 sq. ft. (1.66 sq. m.)		
25	124 lbm (56.2 kg)	201 lbm (91.2 kg)	15.00 sq. ft. (1.39 sq. m.)	17.75 sq. ft. (1.65 sq. m.)		
26	123 lbm (55.9 kg)	200 lbm (90.7 kg)	14.95 sq. ft. (1.39 sq. m.)	17.70 sq. ft. (1.64 sq. m.)		
27	123 lbm (55.7 kg)	199 lbm (90.3 kg)	14.91 sq. ft. (1.39 sq. m.)	17.64 sq. ft. (1.64 sq. m.)		
28	122 lbm (55.4 kg)	198 lbm (89.8 kg)	14.87 sq. ft. (1.38 sq. m.)	17.58 sq. ft. (1.63 sq. m.)		
29	121 lbm (55.1 kg)	197 lbm (89.3 kg)	14.82 sq. ft. (1.38 sq. m.)	17.53 sq. ft. (1.63 sq. m.)		
30	121 lbm (54.8 kg)	196 lbm (88.8 kg)	14.78 sq. ft. (1.37 sq. m.)	17.47 sq. ft. (1.62 sq. m.)		
31	120 lbm (54.5 kg)	195 lbm (88.3 kg)	14.73 sq. ft. (1.37 sq. m.)	17.41 sq. ft. (1.62 sq. m.)		
32	120 lbm (54.2 kg)	194 lbm (87.8 kg)	14.69 sq. ft. (1.37 sq. m.)	17.36 sq. ft. (1.61 sq. m.)		
33	119 lbm (53.9 kg)	193 lbm (87.3 kg)	14.65 sq. ft. (1.36 sq. m.)	17.30 sq. ft. (1.61 sq. m.)		
34	118 lbm (53.6 kg)	191 lbm (86.8 kg)	14.60 sq. ft. (1.36 sq. m.)	17.24 sq. ft. (1.60 sq. m.)		
35	118 lbm (53.3 kg)	190 lbm (86.3 kg)	14.56 sq. ft. (1.35 sq. m.)	17.19 sq. ft. (1.60 sq. m.)		
36	117 lbm (53.1 kg)	189 lbm (85.9 kg)	14.51 sq. ft. (1.35 sq. m.)	17.13 sq. ft. (1.59 sq. m.)		
	W Azimuth Pattern					
14	131 lbm (59.4 kg)	220 lbm (99.7 kg)	17.07 sq. ft. (1.59 sq. m.)	19.96 sq. ft. (1.86 sq. m.)		
15	130 lbm (59.1 kg)	219 lbm (99.2 kg)	17.02 sq. ft. (1.58 sq. m.)	19.91 sq. ft. (1.85 sq. m.)		
16	130 lbm (58.8 kg)	218 lbm (98.7 kg)	16.98 sq. ft. (1.58 sq. m.)	19.85 sq. ft. (1.84 sq. m.)		
17	129 lbm (58.6 kg)	216 lbm (98.2 kg)	16.94 sq. ft. (1.57 sq. m.)	19.79 sq. ft. (1.84 sq. m.)		
18	128 lbm (58.3 kg)	215 lbm (97.7 kg)	16.89 sq. ft. (1.57 sq. m.)	19.74 sq. ft. (1.83 sq. m.)		

AL™ Series UHF Television Antennas

AL8 Horizontally Polarized UHF Television Antenna Mechanical Specifications

RF Channel	Weight				Effective Projected Area (EPA)			
	Antenna Only		1/2-inch Radial Ice		Antenna Only		1/2-inch Radial Ice	
	0 and 0C Azimuth Patterns							
19	128 lbm	(58.0 kg)	214 lbm	(97.2 kg)	16.85 sq. ft.	(1.57 sq. m.)	19.68 sq. ft.	(1.83 sq. m.)
20	127 lbm	(57.7 kg)	213 lbm	(96.7 kg)	16.80 sq. ft.	(1.56 sq. m.)	19.62 sq. ft.	(1.82 sq. m.)
21	127 lbm	(57.4 kg)	212 lbm	(96.2 kg)	16.76 sq. ft.	(1.56 sq. m.)	19.57 sq. ft.	(1.82 sq. m.)
22	126 lbm	(57.1 kg)	211 lbm	(95.7 kg)	16.72 sq. ft.	(1.55 sq. m.)	19.51 sq. ft.	(1.81 sq. m.)
23	125 lbm	(56.8 kg)	210 lbm	(95.3 kg)	16.67 sq. ft.	(1.55 sq. m.)	19.45 sq. ft.	(1.81 sq. m.)
24	125 lbm	(56.5 kg)	209 lbm	(94.8 kg)	16.63 sq. ft.	(1.55 sq. m.)	19.40 sq. ft.	(1.80 sq. m.)
25	124 lbm	(56.2 kg)	208 lbm	(94.3 kg)	16.58 sq. ft.	(1.54 sq. m.)	19.34 sq. ft.	(1.80 sq. m.)
26	123 lbm	(55.9 kg)	207 lbm	(93.8 kg)	16.54 sq. ft.	(1.54 sq. m.)	19.28 sq. ft.	(1.79 sq. m.)
27	123 lbm	(55.7 kg)	206 lbm	(93.3 kg)	16.50 sq. ft.	(1.53 sq. m.)	19.23 sq. ft.	(1.79 sq. m.)
28	122 lbm	(55.4 kg)	205 lbm	(92.8 kg)	16.45 sq. ft.	(1.53 sq. m.)	19.17 sq. ft.	(1.78 sq. m.)
29	121 lbm	(55.1 kg)	204 lbm	(92.3 kg)	16.41 sq. ft.	(1.52 sq. m.)	19.11 sq. ft.	(1.78 sq. m.)
30	121 lbm	(54.8 kg)	202 lbm	(91.8 kg)	16.36 sq. ft.	(1.52 sq. m.)	19.06 sq. ft.	(1.77 sq. m.)
31	120 lbm	(54.5 kg)	201 lbm	(91.3 kg)	16.32 sq. ft.	(1.52 sq. m.)	19.00 sq. ft.	(1.77 sq. m.)
32	120 lbm	(54.2 kg)	200 lbm	(90.9 kg)	16.28 sq. ft.	(1.51 sq. m.)	18.94 sq. ft.	(1.76 sq. m.)
33	119 lbm	(53.9 kg)	199 lbm	(90.4 kg)	16.23 sq. ft.	(1.51 sq. m.)	18.89 sq. ft.	(1.76 sq. m.)
34	118 lbm	(53.6 kg)	198 lbm	(89.9 kg)	16.19 sq. ft.	(1.50 sq. m.)	18.83 sq. ft.	(1.75 sq. m.)
35	118 lbm	(53.3 kg)	197 lbm	(89.4 kg)	16.14 sq. ft.	(1.50 sq. m.)	18.77 sq. ft.	(1.74 sq. m.)
36	117 lbm	(53.1 kg)	196 lbm	(88.9 kg)	16.10 sq. ft.	(1.50 sq. m.)	18.72 sq. ft.	(1.74 sq. m.)

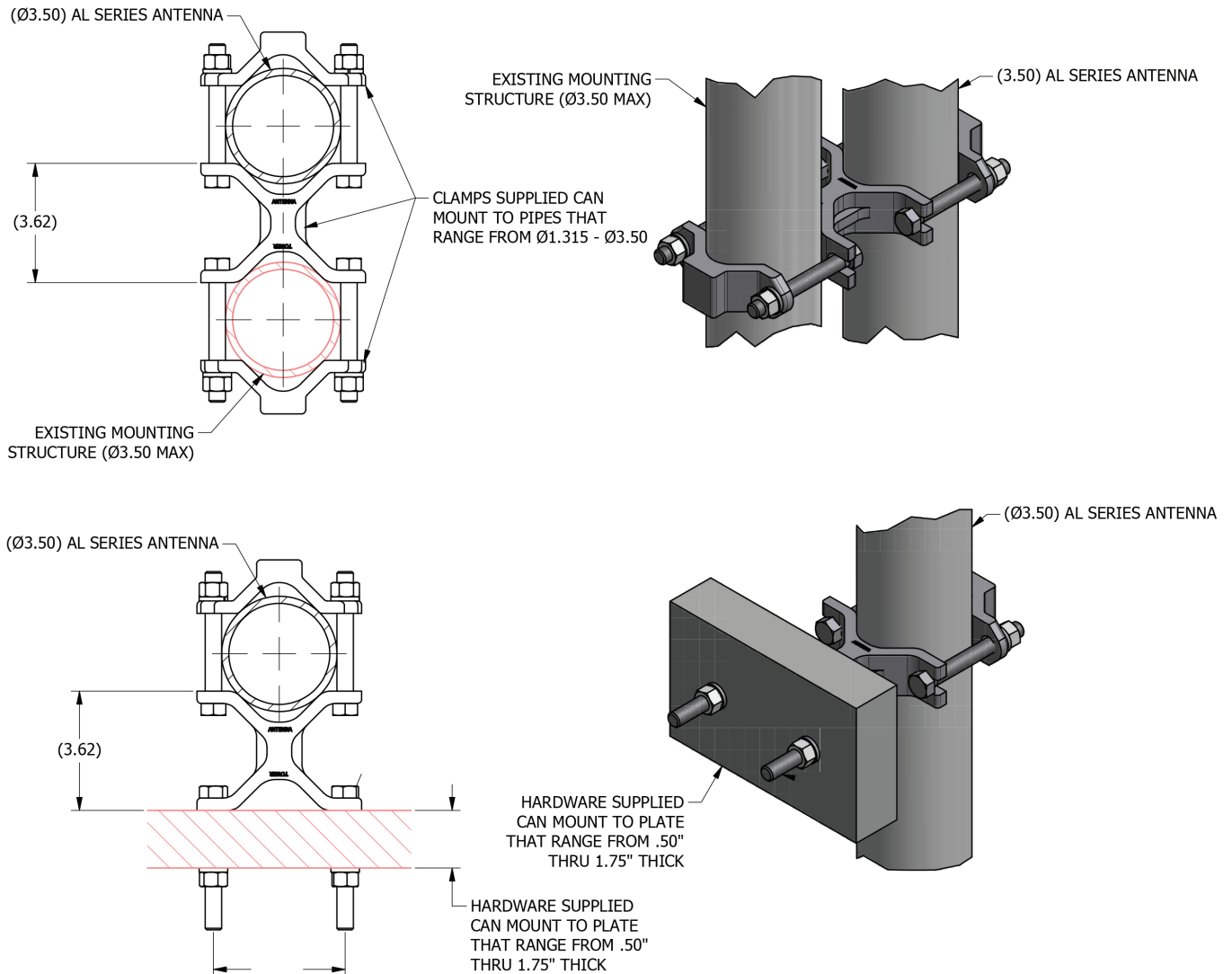
AL8 UHF Television Antenna Length

RF Channel	Length	
14	20.00-feet	(6.10-meters)
15	19.86-feet	(6.05-meters)
16	19.73-feet	(6.01-meters)
17	19.59-feet	(5.97-meters)
18	19.46-feet	(5.93-meters)
19	19.32-feet	(5.89-meters)
20	19.18-feet	(5.85-meters)
21	19.05-feet	(5.81-meters)
22	18.91-feet	(5.76-meters)
23	18.77-feet	(5.72-meters)
24	18.64-feet	(5.68-meters)
25	18.50-feet	(5.64-meters)
26	18.37-feet	(5.60-meters)
27	18.23-feet	(5.56-meters)
28	18.09-feet	(5.51-meters)
29	17.96-feet	(5.47-meters)
30	17.82-feet	(5.43-meters)
31	17.69-feet	(5.39-meters)
32	17.55-feet	(5.35-meters)
33	17.41-feet	(5.31-meters)
34	17.28-feet	(5.27-meters)
35	17.14-feet	(5.22-meters)
36	17.00-feet	(5.18-meters)

AL™ Series UHF Television Antennas

AL Series Mounts

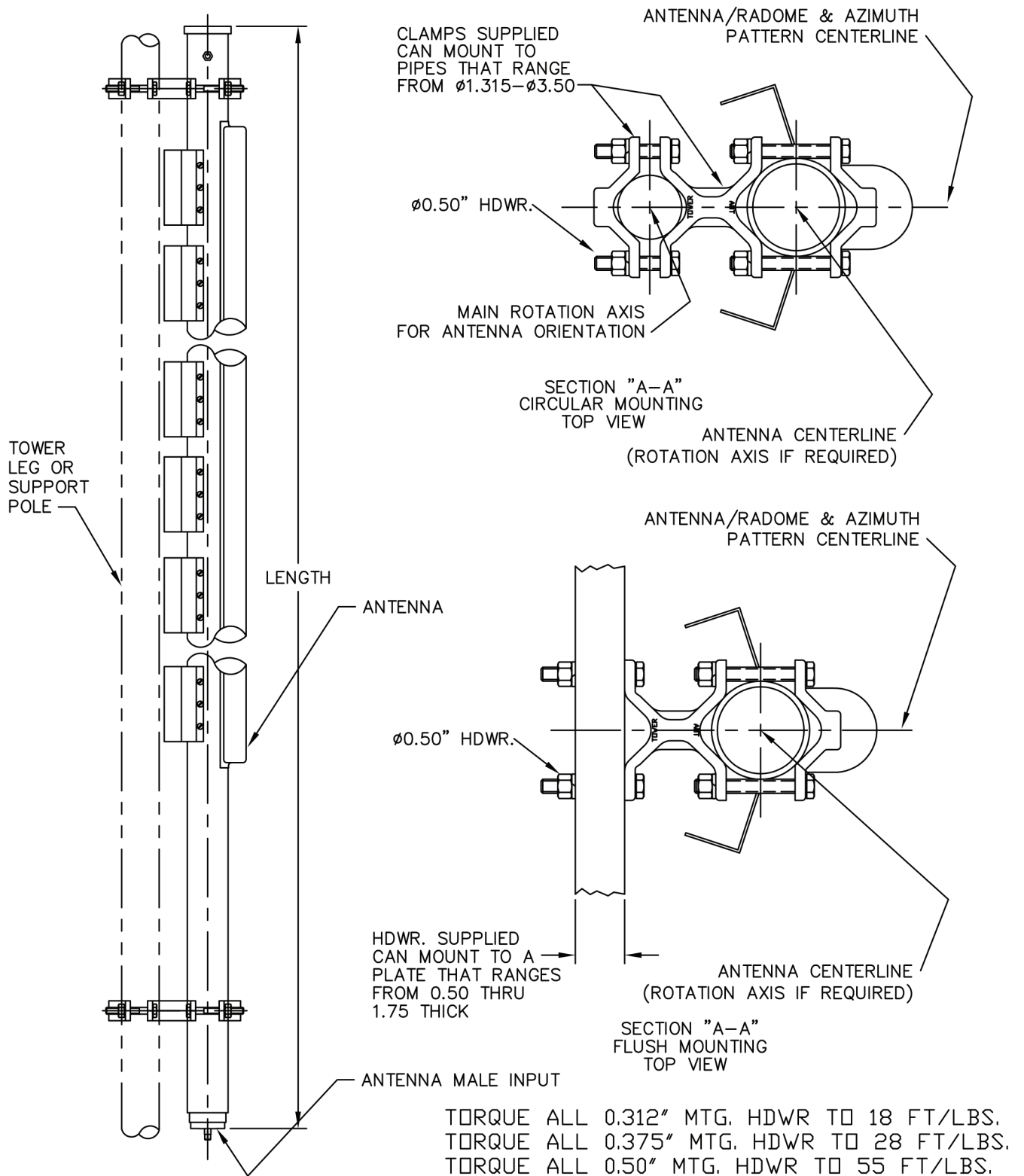
All AL Series UHF television antennas are shipped with two clamp one brackets for mounting on poles or tower legs from 1.315-inches to 3.5-inches OD or to flush mount to flat surfaces from 0.50-inches to 1.75-inches. Standoff support pipes, face mount brackets, and mounts for larger diameter poles are available from ERI as optional items. Please contact ERI for a proposal for these requirements.



ALMNT-KIT02-1 Replacement AL8/6/4 Mount, single mounting bracket

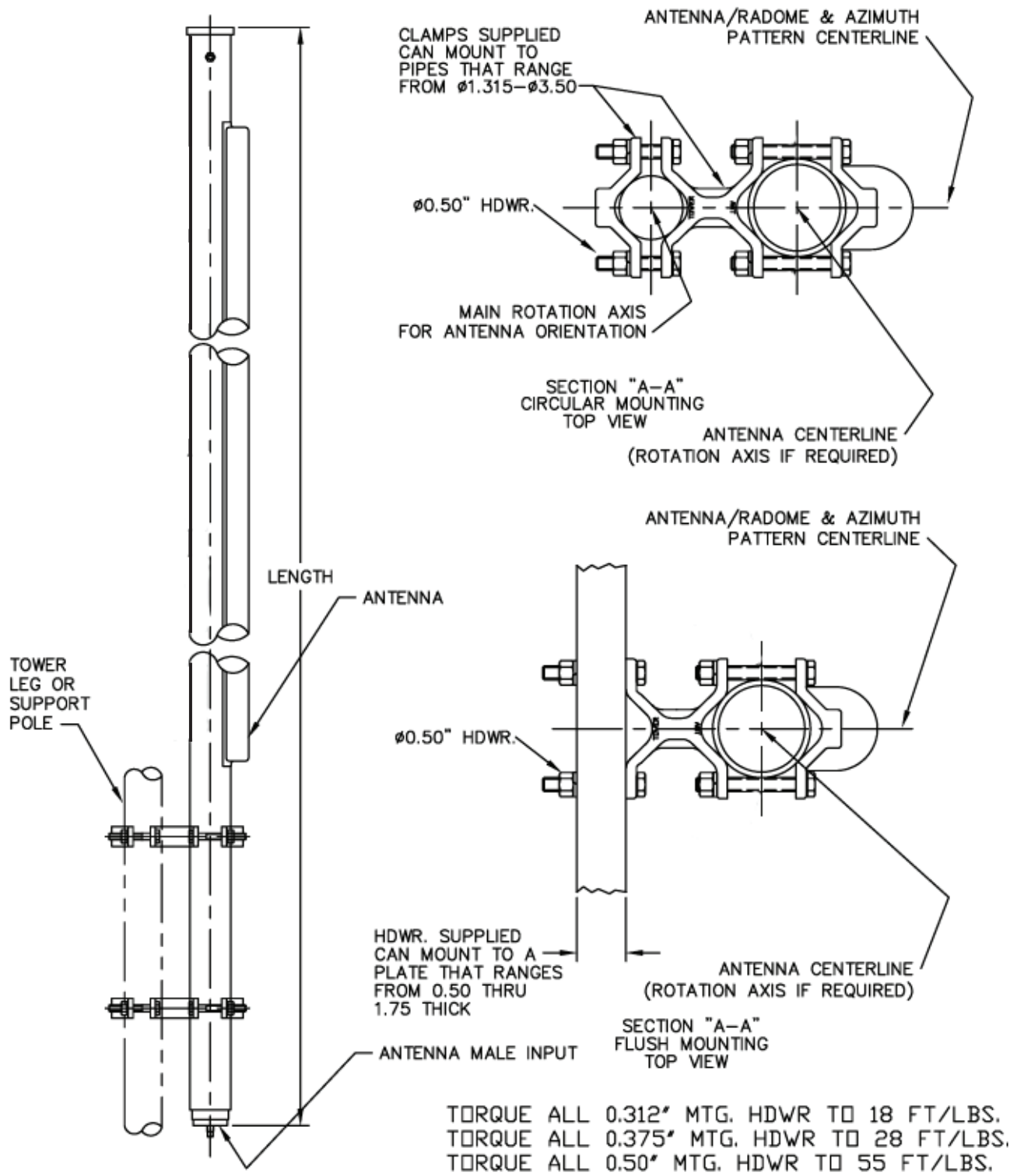
ALMNT-KIT02-2 Replacement AL8/6/4 Mount Kit, quantity of two (2) mounting brackets included in kit.

AL™ Series UHF Television Antennas



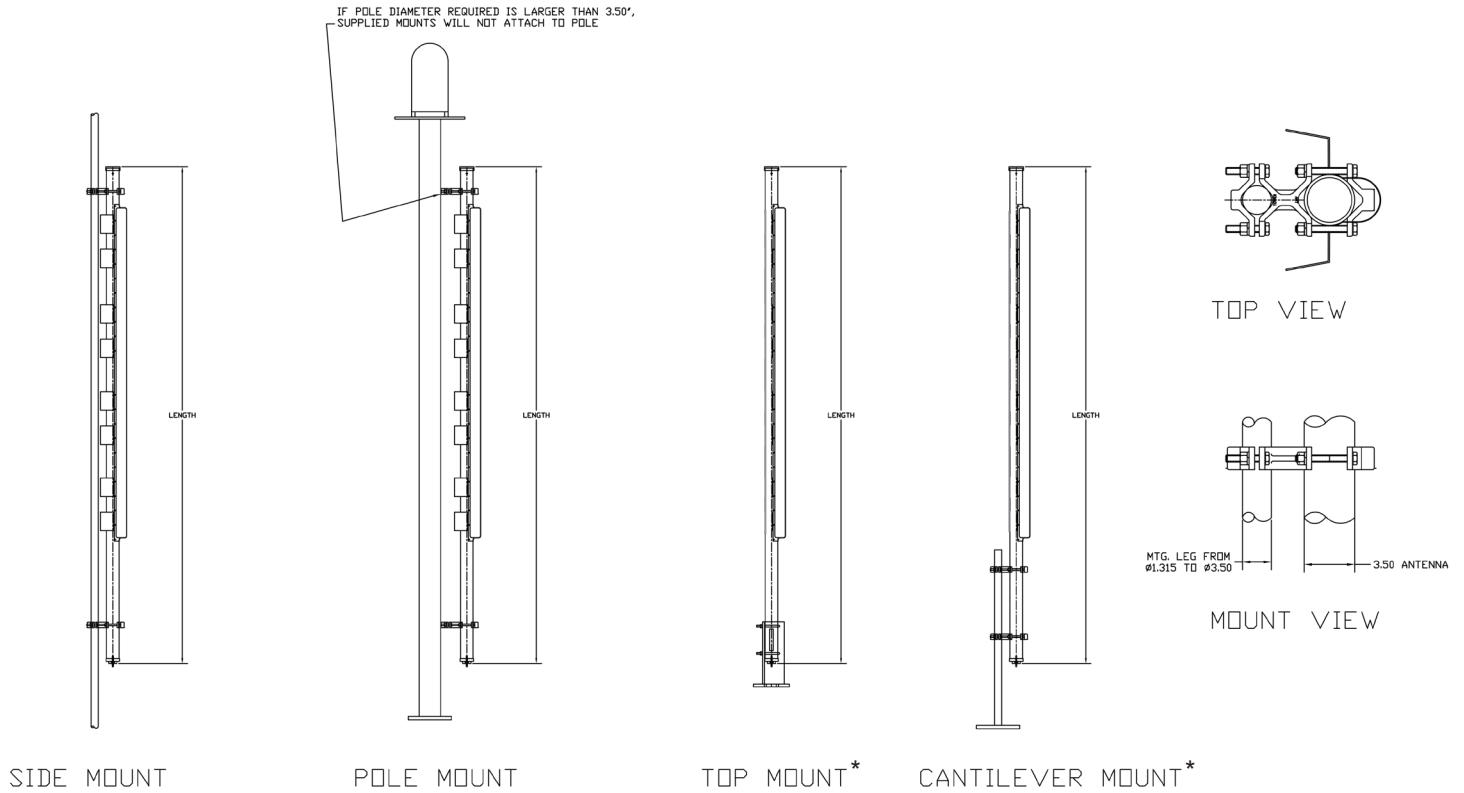
AL4, AL6, and AL8 UHF Television Antenna Typical Side/Pole Mounting Configuration

AL™ Series UHF Television Antennas



AL4, AL6, and AL8 UHF Television Antenna Cantilevered Mounting Configuration
 *AL-OC and AL-O Model Antennas Only

AL™ Series UHF Television Antennas



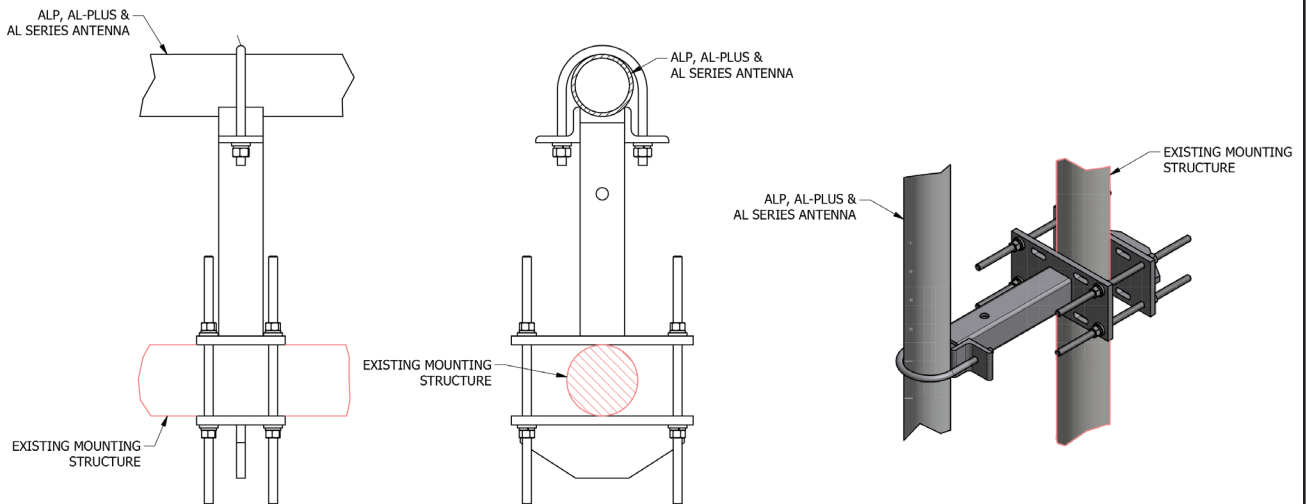
Typical Mounting Configurations for AL Series UHF Television Antennas
*AL-OC and AL-O Model Antennas Only

AL™ Series UHF Television Antennas

AL Series Accessories and Options

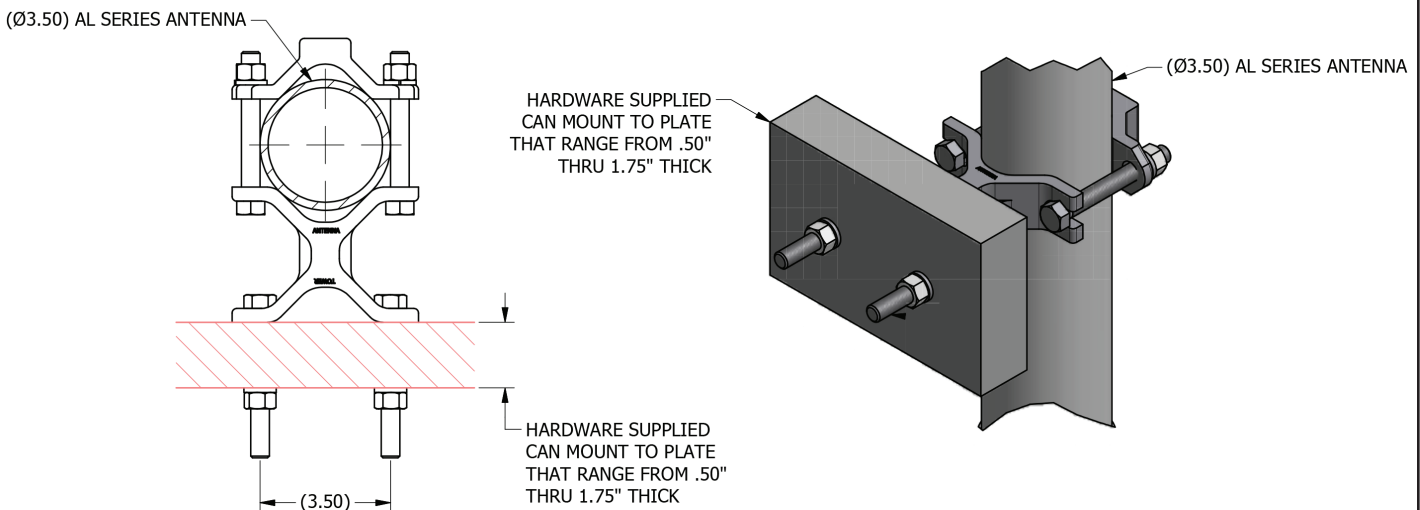
Type No: ALMNTKIT01-12

NOTES:
1. REMOVE ALL BURRS & SHARP EDGES.



Optional standoff mounting bracket for AL Series UHF television antennas 15-inch (381 mm) standoff brackets for mounting on poles or tower legs from 1.5-inches (35 mm) to 7.5-inches (191 mm) OD. Standoff support pipes, face mount brackets, and mounts for larger diameter poles are available from ERI as optional items. Please contact ERI for these requirements. This is also the replacement bracket ALP and AL PLUS Series UHF television antennas.

Type No: ALMNTKIT03-1

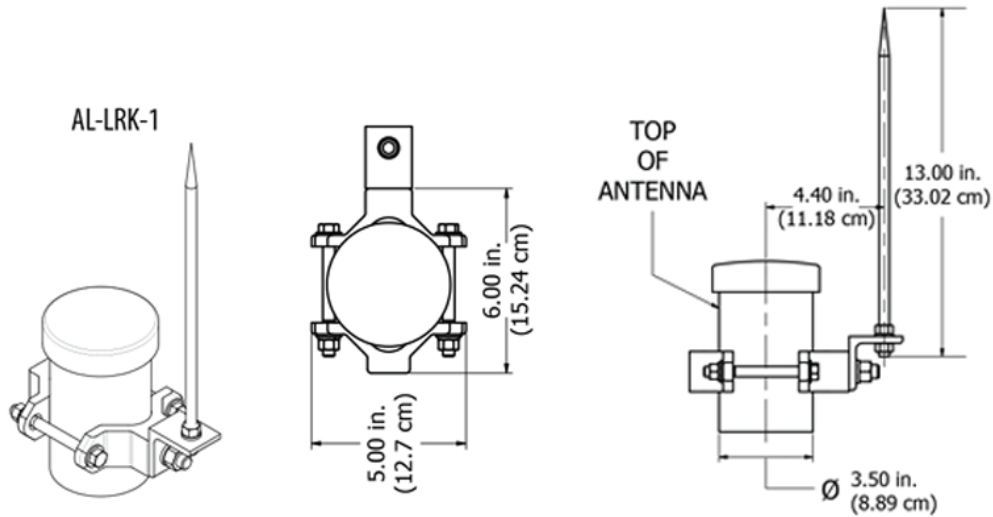


SL8 Mount Adaptor plate, 2 required per antenna. Optional mounting bracket for AL Series UHF television antennas matches SL8 mounting holes.

AL™ Series UHF Television Antennas

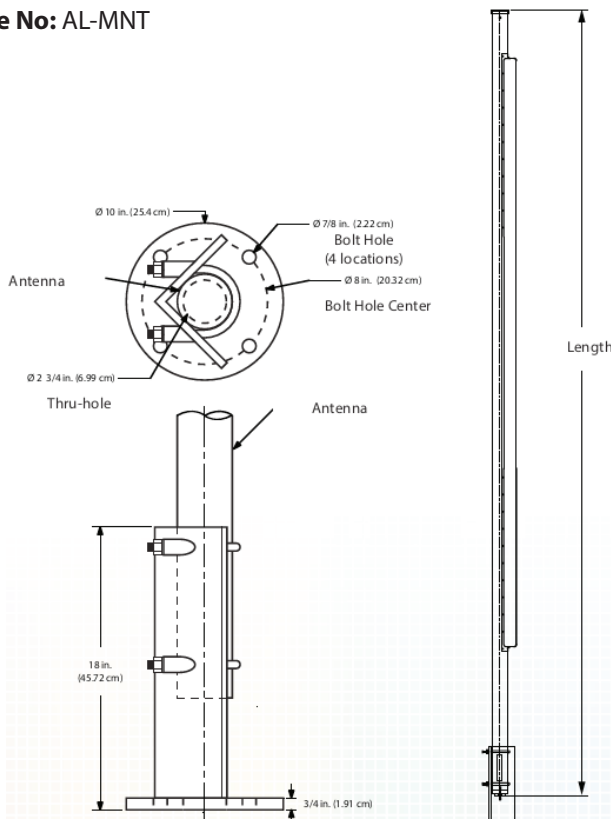
AL Series Accessories and Options

Type No: AL-LRK-1



AL Series Lightning Rod Kit. Includes 13.00-inch (330 mm) lightning rod, attachment hardware, and mounting clamp. For top mount applications only.

Type No: AL-MNT



Installation Notes:

1. CAUTION: Lightning rod is very sharp! Take care to avoid injury when unpacking and installing this accessory.
2. Install at top of AL Series UHF Television antenna.
3. Position top of mounting bracket approximately 1.5-inches (38 mm) below the top of the antenna.
4. Tighten the mounting evenly to a minimum recommended torque of 40 ft-lbm (54 N)

Top Mount Bracket for AL Series UHF television antennas.