

ERI Type RLA600-17 and RLA700-17

Rev. A

RIGID HORIZONTAL HANGERS

For Rigid Coaxial Transmission Lines

Description

ERI Types RLA600-17, RLA700-17, and RLA800-17 Horizontal Rigid Hangers are used for supporting a horizontal run of Rigid Coaxial Transmission Line between the transmitter building and the antenna tower. The hangers prevent lateral or vertical movement of the line, but allow some longitudinal movement.

The hangers are intended to reduce the likelihood of low frequency mechanical vibrations in long horizontal runs at windy locations. However, to allow for line expansion and contraction with changing ambient temperatures, there is a limit to how close the hangers can come to the tower. Inside this limit, ERI Horizontal Spring Hangers must be used. This limit is given in Table 1, below.

Hangers are normally spaced at 10ft. intervals.

Minimum Distance from Tower to first Rigid Hanger

All distances are in feet.

Tower Height	RLA600-17	RLA700-17	RLA800-17
250	25	27	30
500	35	38	41
750	43	47	50
1000	49	54	58
1250	55	59	65
1500	61	66	71
1750	65	72	77
2000	70	76	82

Table 1

NOTICE

The installation, maintenance, or removal of antenna systems and transmission line requires qualified, experienced personnel. ERI installation instructions have been written for such personnel. Antenna systems should be inspected once a year by qualified personnel to verify proper installation, maintenance, and condition of equipment.

ERI disclaims any liability or responsibility for the results of improper or unsafe installation practices.

Note: If no holes are available for hanger attachment, contact the tower manufacturer for applicable safety regulations regarding the drilling of any holes in tower sections.

Installation Procedure

1. Attach the Hanger as shown in Figure 1. Note that the longer threaded rod is vertical. It does not matter which side of the line the horizontal link lies on. However, where more than one hanger is installed, all horizontal links must be on the same side of the line.
2. Adjust the nuts on the threaded rods to set the distances shown in Table 2.
3. Remove the lower clamp, install the line section and replace the clamp.
4. Tighten all nuts to a torque of 21lbf-ft.

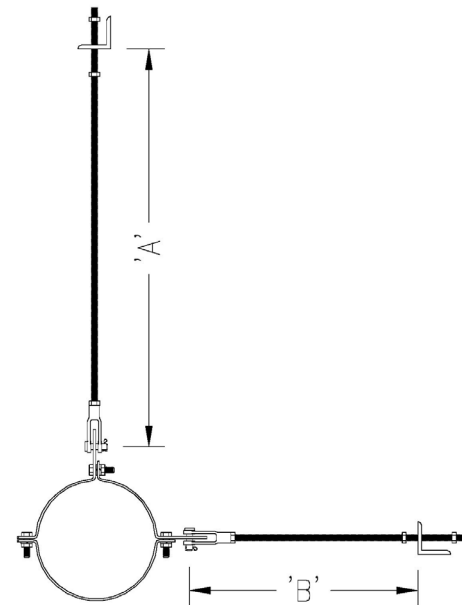


Figure 1

Horizontal Rigid Hanger Settings

Line Size	Hanger Type	Line type	Distance A	Distance B
6-1/8"	RLA600-17	STD/MACX650	19-1/8"	12-3/8"
		STD/MACX675	18-1/2"	12-3/8"
7-3/16"	RLA700-17	STD/MACX775	22-1/2"	13"
8-3/16"	RLA800-17	STD/MACX875	24"	13-1/4"

Table 2