

WF513 UHF Waveguide Low Pass Harmonic Filter

WF513 UHF Waveguide Low Pass Harmonic Filter

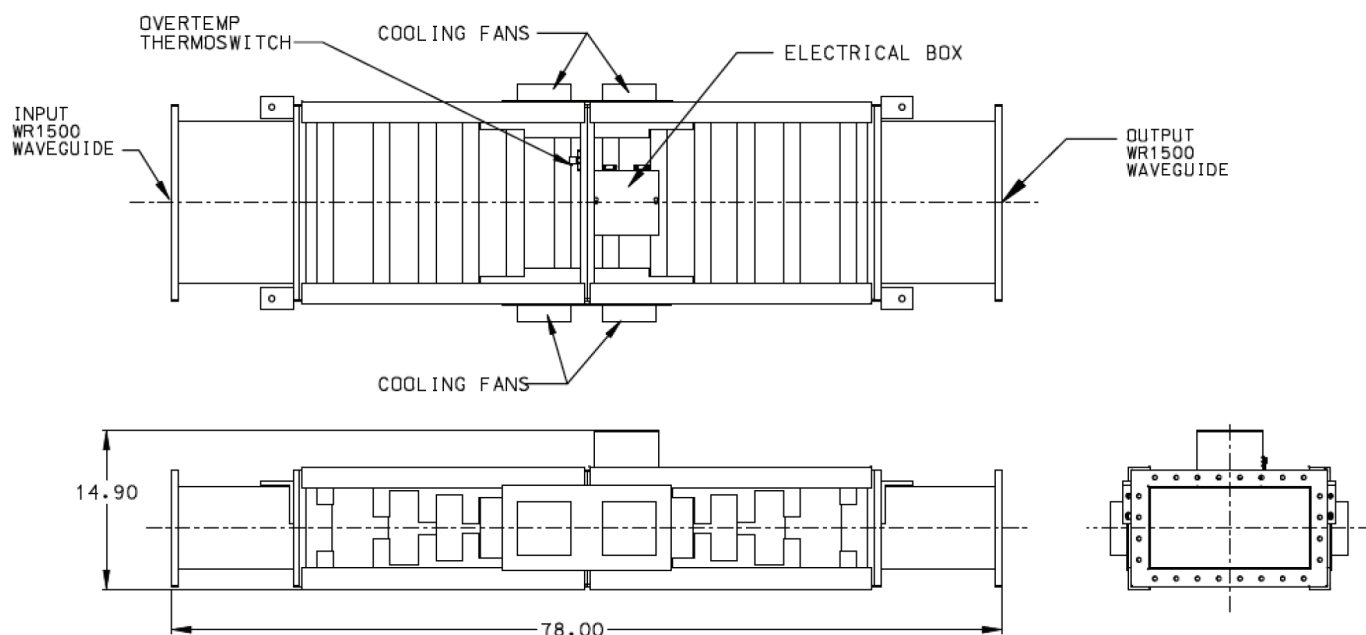
The WF513 high power UHF low pass harmonic filter is a corrugated waveguide design in WR1500. There are two (2) different versions of the filter for the full range of US RF Channels 14 to 41 (470 to 638MHz). The filters are supplied tuned to a specified channel. The filters are fan-cooled and include an overtemperature thermo-switch. The filter can be tuned for 6, 7, or 8 MHz pass bandwidths. ERI also has high power waveguide harmonic filters available to cover operating frequencies as high as 800 MHz.

The WF513 is generally ceiling hung with customer supplied support hardware. These items can be optionally supplied by ERI. In addition, ERI can provide complete RF system that would include bandpass filters, directional couplers for system monitoring, fine matching sections to optimize system performance, waveguide and coaxial motorized switched or patch panels, system test loads and can include integrated support frames in configurations tailored to the physical space available.

Typical Specifications:

Input and Output Connections:	WR1500 flanged
Output Power Rating:	75 kW average power, maximum
VSWR:	1.06 : 1 or better over specified channel
Insertion Loss:	0.1 dB max over specified channel
Harmonic Rejection:	40 dB min. at 2nd harmonic 30 dB min. at 3rd harmonic
Group Delay:	25 nsec maximum variation over specified channel
AC Power Required:	115 or 230 VAC, 50/60 Hz

US RF Channel	Length	Weight	Part Number 110 VAC	Part Number 220 VAC
14 to 27	96 inches	165 lbm	WF513-401B	WF513-403B
28 to 41	78 inches	130 lbm	WF513-402B	WF513-404B



ERI Model WF513-402B WR1500 waveguide low pass harmonic filter.

Specify with order:

- Operating channel and frequency range
- AC power configuration for cooling fans