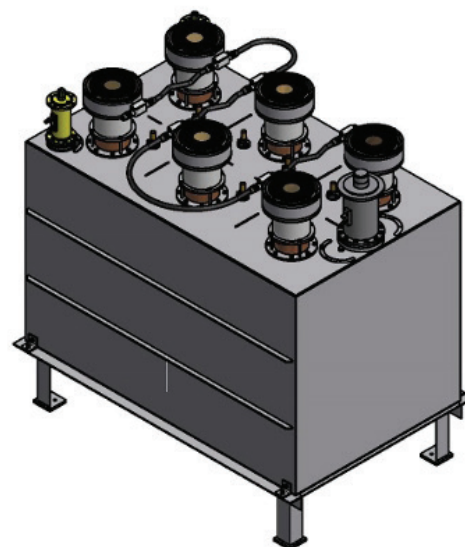


FI836 Integrated FM Channel Combiner

Features

- Economical alternative to traditional branch combiner configurations
- Eliminates on site filter assembly
- High power handling in a small footprint
- Temperature compensated filter design
- 15 kW per input convection cooled (30 kW per input with forced air cooling)

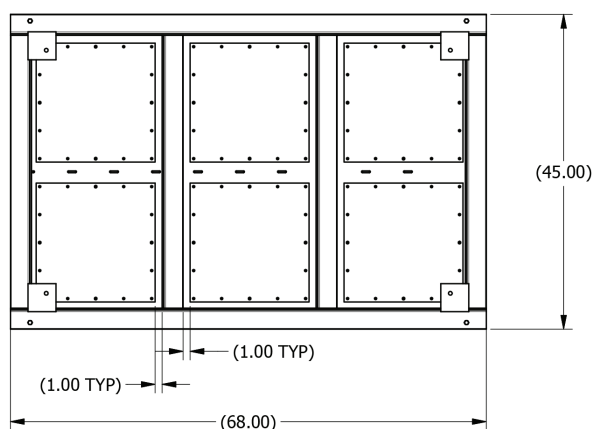
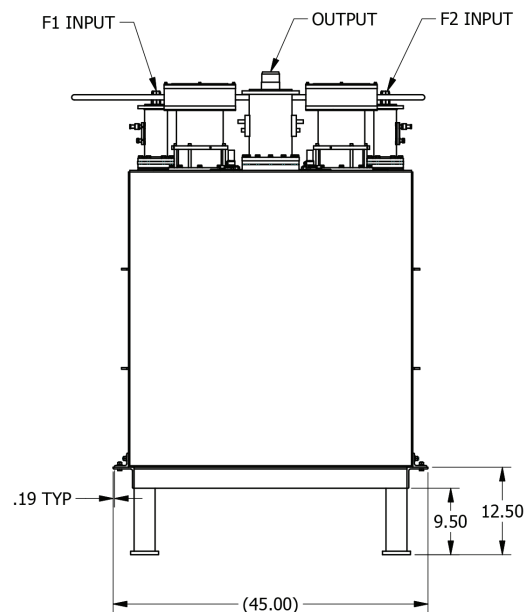
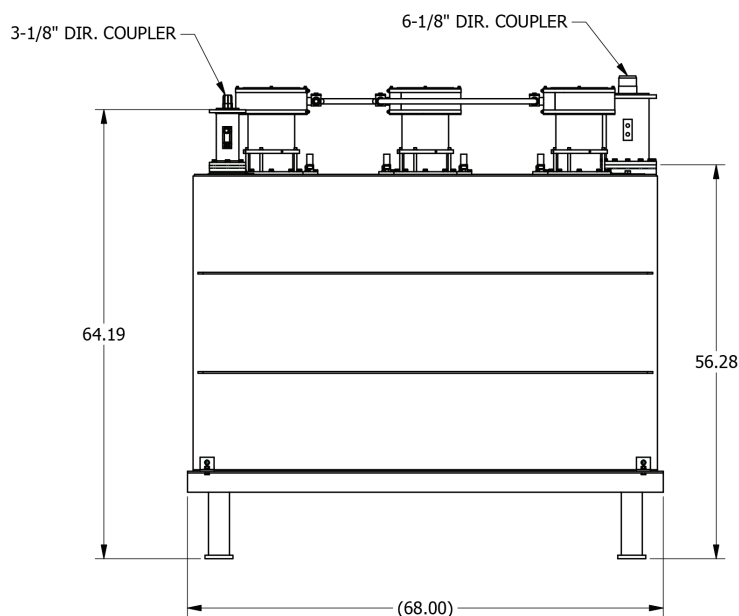
The FI836 is a compact solution for combining two FM station into a single antenna. This is a single cabinet solution that is an economical alternative to traditional modular systems. The band pass filters are integrated into a single compact floor mounted cabinet that requires little or no onsite combiner assembly. The filters are temperature compensated and the standard combiner configuration includes directional couplers at the combiner inputs and combined output.



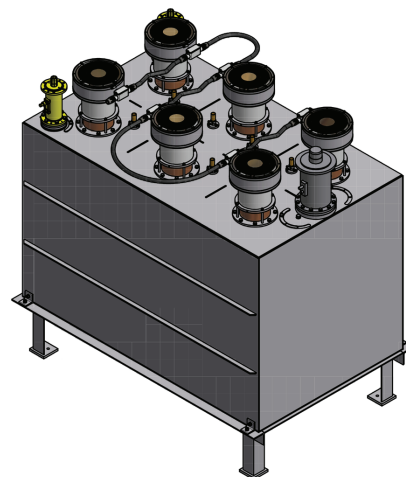
Specifications

Model:	FI836	Convection Cooled
	FI836A	Forced Air-Cooling
Input Connectors:		3-1/8-inch EIA flange
Output Connector:		4-1/16-inch or 6-1/8-inch flange
Power Handling Capability:	Convection	15 kW per input 30 kW combined output
	Forced Air	30 kW per input 60 kW combined output
Combiner Size and Weight:		
		Convection
	Length	68.0 inches (1727 mm)
	Width	45.0 inches (1143 mm)
	Height	64.2 inches (1631 mm)
	Weight	767 lbm (347.8 kg)
		Forced Air
	Length	68.0 inches (1727 mm)
	Width	45.0 inches (1143 mm)
	Height	69.0 inches (1753 mm)
Frequency²:		All FM Broadcast Channels (88 to 108MHz)
VSWR¹:		<1.07:1, ± 150 kHz, maximum
Insertion Loss:		<0.20 dB
Group Delay:		<100 nsec overall variation ± 200 kHz
1) When terminated in 50-Ohm resistive load.		
2) 1.8 MHz or more between frequencies. Closer frequency spacing configurations available as a special order item		
Specifications presented are typical, total system performance may vary. In a continuing effort to improve products, ERI reserves the right to change specifications and features.		

FI836 Integrated FM Channel Combiner



BOTTOM VIEW



Layout drawing of ERI Model FI836 Integrated FM Channel Combiner with optional forced air cooling. Shown with standard configuration of a single port fixed directional coupler at the combiner inputs and a dual port fixed directional coupler at the combined output. Dimensions shown are inches.