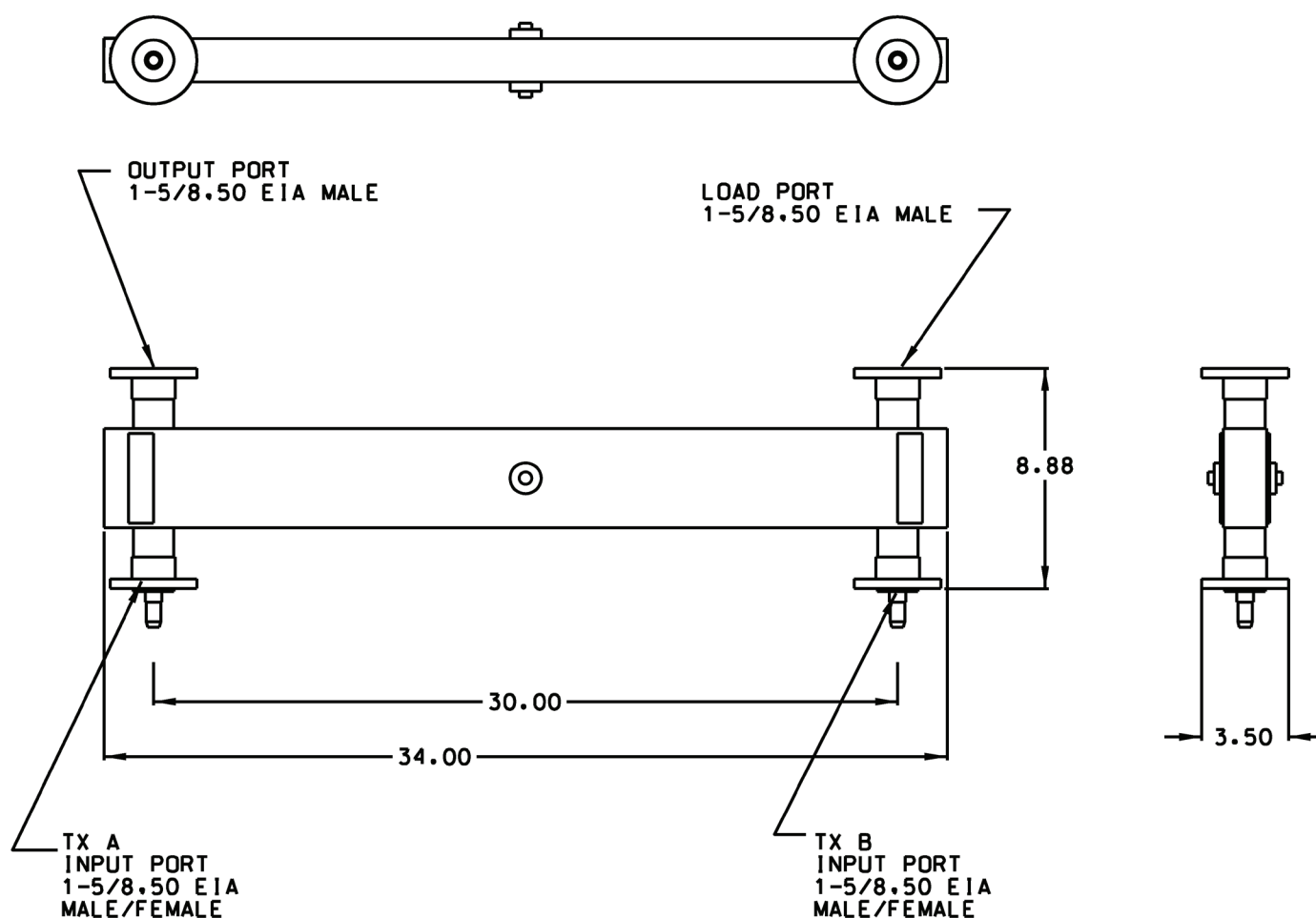


## Model CH210 3 dB FM Hybrid

**Hybrid Combiner for FM 3.0 dB 10 kW average power  
FM (5 kW + 5 kW) (88.1 to 107.9 MHz)**



ERI Model CH210 3 dB FM Hybrid, shown with optional clamp on flanges. Dimensions shown are inches

The CH210 is a 3.0 dB, 90-degree Hybrid Coupler suitable for use as either a power combiner or as a power divider. The Hybrid has a "cross-over" configuration. The hybrid is rated to handle up to 10 kW (2 x 5 kW).

### ERI CH210 3 dB FM Hybrid Splitter/Combiner Specifications:

Power Handling:	Analog FM: 5 kW each input, 10 kW combined
Frequency Range:	88 to 108 MHz
Input VSWR: 1.06 :	1 or better
Insertion Loss:	3.01 dB +/- 0.15 dB
Isolation:	30 dB min.
Dimensions:	See outline drawing above
Connections:	1-5/8-inch, 50 ohm unflanged (female) on all ports 1-5/8-inch, 50 ohm flanged (male or female) optionally available

Directional couplers and support frame is optionally available.