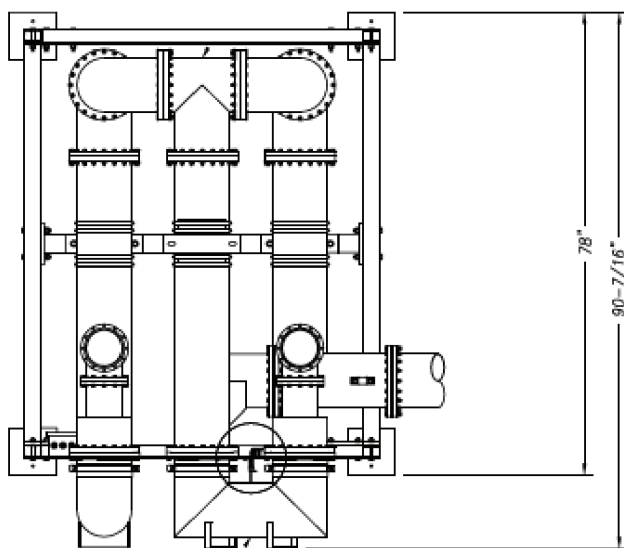


# PP9027 Power Divider and Patch Panel System

The PP9027 is a high power 9-3/16-inch coaxial patch panel and in phase 3 dB power divider designed for very high-power Master FM Antenna and Combiner Systems. It intended to be installed at the output of the FM channel combiner and it divides the combined to feed two transmission line that are usually configured to feed the upper and lower halves of a Master FM Antenna. The system is capable of handling up to 280 kW of combined power at its input. The system provides the following functionality:

1. Provides a power splitter to divide the combiner output in half to feed the top half and the bottom half of the antenna.
2. Includes a manual patch panel system that allows the combined signals to be fed in anyone of the following modes (for both the analog and digital sides of the system):



- a. Output A of the power splitter to the top half of the antenna and Output B to the bottom half of the antenna.
- b. Bypass the power splitter and feed the combined output to the top half of the antenna.
- c. Bypass the power splitter and feed the combined output to the bottom half of the antenna.

